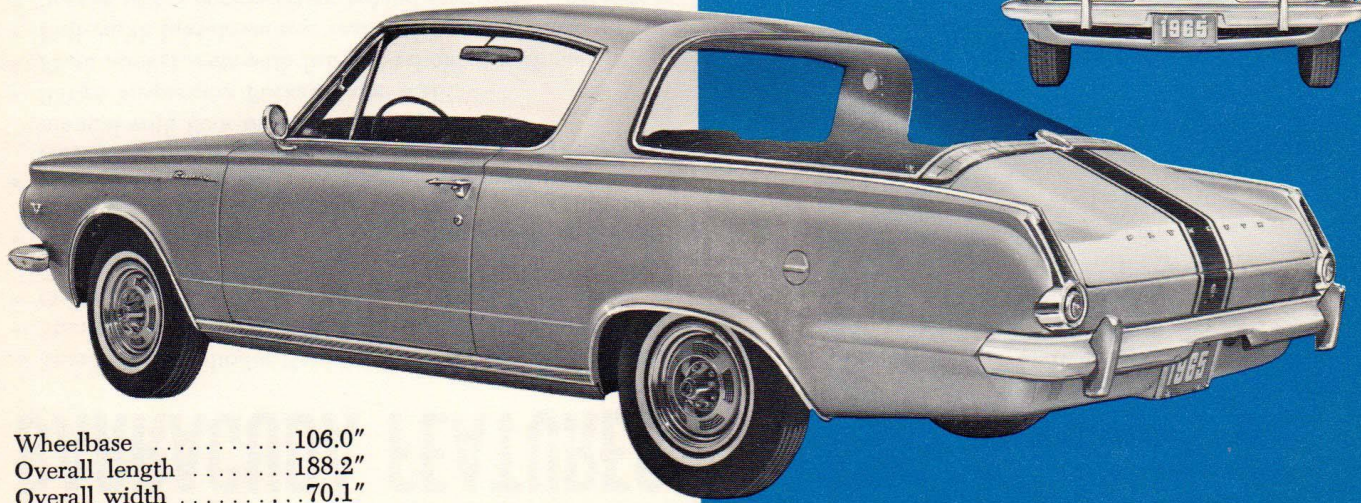


# Barracuda

2-Door Sports Hardtop



Wheelbase .....106.0"  
Overall length .....188.2"  
Overall width .....70.1"

109

**BARRACUDA**

# BARRACUDA FEATURES

- Standard Six-cylinder Engine . . . 145-horsepower "Super 225"
- Standard Eight-cylinder Engine . . . 190-horsepower 273 V-8
- Optional Eight-cylinder Engine . . . 235-horsepower Commands 273 V-8
- Standard Transmission . . . 3-Speed Manual, shifting lever mounted on steering column
- Optional Transmissions . . . 3-Speed TorqueFlite with console-mounted selector lever; 4-speed fully synchronized manual with floor-mounted shifting lever
- Rallye Suspension Package, optional
- Front bucket seats with full-foam molded cushions
- Full-width fold-down rear seat with carpeted back
- Special utility compartment behind rear seat . . . extends to 7-foot length with second seat and trunk security panel folded down
- Thick, nylon-blend pile carpeting, color-keyed, in passenger and utility compartments
- Safety-padded instrument panel, optional



Barracuda Interior

110

- Two-spoke steering wheel with partial horn ring; 3-spoke, wood-grained plastic wheel, optional
- 6-Way Custom-Positioned front seats, manual adjustment
- Anti-windlift electric windshield wipers, parallel-operating
- Flow-through fresh-air ventilation with concealed outlets below rear window
- Individual fresh-air ventilation doors under each side of the instrument panel
- High-capacity fresh-air heater and defroster with quick, air-blend temperature control
- Ash receivers: instrument panel and rear armrests
- Deluxe wheel covers with Valiant insignia
- Custom wheel covers with simulated knock-off hubs or Sport wheel covers with exposed chrome-plated wheel lugs, optional
- Stainless sill and wheelhouse moldings and side window trim
- All-vinyl seat trim
- Tinted rear window glass
- Directional signals
- Rear compartment roof pillar courtesy lights
- Front compartment courtesy light
- Backup lights, optional
- Front and rear armrests
- Sun visors, left and right
- Coat hooks
- Cigar lighter
- Safety seat belts, front
- Safety-Rin wheels
- Safety door latches
- 8.50 x 13" tires (Six-cyl.)
- 7.00 x 13" tires (V-8)
- Concealed spare tire
- Rallye-type parking/directional and roof lights

111

## FEATURES

### Plus Plymouth's Famous Features

- Torsion-Aire Suspension
- Unibody Construction
- Rust-Resistant Body
- Buffable Acrylic Enamel Body Paint
- Constant-Control Power Steering (optional)
- Servo-Contact, Self-Adjusting Brakes
- Alternator-Powered Electrical System

## FEATURES TO PLEASE PASSENGERS



**Traveling by Day** can be real fun for the whole family . . . and for the dog, too . . . because Barracuda's fastback sports styling leaves room for a full-width rear seat, a large utility compartment and a trunk. A fold-down security panel, that can only be unlatched from inside the trunk, forms the back wall of the utility compartment.

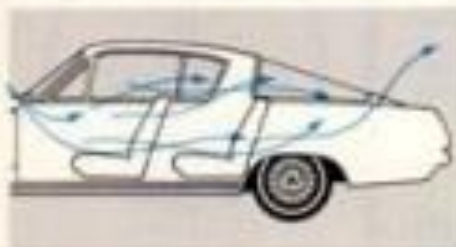


**Traveling by Night** with the family is peaceful and relaxing . . . thanks to Barracuda's fold-down rear seat that lengthens the utility compartment to over seven feet (with the trunk security panel folded down). This big "sleeping compartment" is ideal for fishermen, hunters or vacationing couples stopping at state and national parks.

112

### Flow-Through Fresh-Air Ventilation

Barracuda's special flow-through ventilation system with air outlets below the rear window, keeps air fresh for passengers even with all windows closed. Air entering through the fresh-air doors circulates throughout the car, keeping the windows free of moisture, then escapes through the rear outlets. When the heater is operating, warm fresh air flows through, helping to keep the rear window clear of frost in cold weather. NOTE: All windows, including vent windows, must be kept closed for the flow-through air pressure to be maintained.



**Rugged Rear Body Structure.** Special heavy-duty bow-section steel bracing, above and behind Barracuda's large rear window, reinforces the entire rear body structure for maximum strength and rigidity. The upper bow section arches above the rear window and is anchored at each end by welding to the rear wheelhouseings. Two additional steel reinforcement panels at the sides of the rear window join with the bow-section bracing and wheelhouseings to unify the entire rear structure of the body. This sturdy bracing gives Barracuda the strength of a conventional hardtop body that has supports at the package shelf.

113

FEATURES



**Barracuda's Special Wood-Grained Steering Wheel** adds a custom touch to the driver's compartment. The three satin-finish metal spokes are speeded to give the driver a sports-car feel-of-the-wheel for maximum driving enjoyment.

## OPTIONS TO DELIGHT THE DRIVER

**TorqueFlite with Console Selector** gives the Barracuda driver the look and feel of sports-car shifting without having to do any of the work. TorqueFlite's high breakaway ratio and three forward gear speeds give instant response to the throttle for rapid acceleration from a standing start and all through the shifting range. The console, with an illuminated dial, is included with TorqueFlite on Barracuda.



**Four-on-the-Floor**, with smooth-action Hurst drifting linkage, gives Barracuda the ultimate in sports-car driving control. Designed for the enthusiast, this four-speed manual transmission, synchronized in all forward gears, permits quick shifting through the gears and smooth downshifting into low gear while the car is still in motion. A special floor plate displays four-speed and reverse shift pattern.



114

## BARRACUDA'S CHOICE OF ENGINE OPTIONS

The **Commando 273 V-8**, Barracuda's new blazing performer, sporting 235 horsepower, features a four-barrel carburetor, dual breaker points, non-silenced air cleaner, high-performance camshaft, high compression ratio of 10.5 to 1, low back pressure exhaust and special engine trim.

The **273-cu.-in. 2-barrel V-8**, developing 180 horsepower gives Barracuda agility in traffic and responsive passing power on the highway . . . and on regular gasoline.



Commando 273

V-8 SPECIFICATIONS		
Commando 273		273 V-8
273	Displacement, cu. in.	273
235	Horsepower	180
280	Torque, lb. ft.	200
4 bbl.	Carburetor	2 bbl.
10.5 to 1	Compression Ratio	8.8 to 1
Special	Camshaft	Standard
1.67" x 1.31"	Bore and Stroke	1.67" x 1.31"
Premium	Fuel Recommended	Regular
Single, low back pressure w/resistor	Exhaust System	Single



Standard 273 V-8

115

OPTIONS

## BARRACUDA'S ROAD AND TRACK OPTIONS



### **Barracuda's Rallye Suspension . . . For Quick Handling, Flat Cornering!**

Now you can have the suspension that converts your Barracuda into a flat cornering, road-bugging machine that will gratify even the most ardent driving enthusiasts. Barracuda's optional Rallye Suspension Package, featuring heavy-duty torsion-bar front springs and rear leaf springs and a special anti-sway bar, gives a firm, controlled ride designed for fast cornering and sure-footed stability.

Firm-Ride Shock Absorbers are a complementary option with the Rallye Suspension Package as they reduce suspension oscillations set up by rough-road conditions and produce an even firmer control of the ride. They are recommended where maximum wheel control is required.

116

**Sure-Grip Differential** gives Barracuda top traction so you won't spin your wheels on road surfaces that are loose, irregular or slippery. An internal clatching device automatically transfers driving force to the rear wheel with the most traction.

**Constant-Control Power Steering** is a two-way driving aid: first, it reduces steering effort to a fingertip task; second, its low steering ratio speeds up steering response. Just 3.5 steering wheel turns move front wheels lock to lock.

**Power Brakes**, optional, have a vacuum-powered booster that takes up to 30% of the effort out of braking.

**Front Wheel Disc Brakes** are available on Barracuda as a dealer-installed option for competitive drivers. Disc brakes produce straight-line, no-fade stops even after repeated brake applications. The disc-brake package includes special front-wheel spindles and wheel nuts, over-size front wheel bearings and a front brake power booster.

**Sport Wheel Covers**, featuring exposed chromium-plated wheel bolts, give Barracuda's wheels that sports car appearance.

**Racing Stripes**, available in Black, White, Medium Blue, Gold and Ruby, are designed to give Barracuda a competition look.

**Custom Retractable Seat Belts** have take-up rollers that automatically roll up the seat belts into color-keyed vinyl boots as they are out of the way when not in use. They are available in sets of two (for the front seat only) and in sets of four (2 front and 2 rear).

**Rear Window Defogger** with powerful centrifugal blower is available as a dealer-installed option. Recommended for dispelling fog and frost in high-humidity areas.

**Remote-Control Rearview Mirror** has convenient toggle adjustment on driver's door . . . no need to wind down window to make mirror adjustments during inclement weather.

**Transcend AM Radio** with transistors that give instant play and long life features 5 push-button station selections and tone control.

117

OPTIONS

## BARRACUDA STANDARD EQUIPMENT

- Alternator
- Armrest, Rear Medium-Bright
- Armrest, Front Long-Bright
- Ash Receivers in rear armrests
- Automatic Choke
- Battery—48 amp-hr.
- Brakes, Self-Adjusting
- Cigar Lighter
- Closed-Crankcase Vent System
- Coat Hooks
- Directional Signals
- Engines—6-Cyl., 225 cu. in., 145 hp.  
—V-8, 273 cu. in., 180 hp.
- Floor Covering:
  - Passenger Compartment—  
Color-Keyed Carpet
  - Utility Area—Color-Keyed  
Carpet
  - Trunk Compartment—Carpet
- Flow-Thru Ventilation
- Glass, Tinted—Rear Window
- Heater and Defroster
- Horns, Dual
- Lights:
  - Rear Roof Pillars
  - Front Compartment Courtesy
- Mirror, Inside Rearview
- Moldings, Exterior
  - Window Opening
  - Rear Window Opening (Mylar)
  - Windshield Opening (Mylar)
  - Rear Window Lower
  - Applique
  - Sill and Wheelhouse
  - Drip Rail
  - Rear Fender Top
- Moldings, Interior
  - Door Garnish—Painted
  - Roof Side Rail—Painted
  - Windshield Side—Painted
- Oil Filter—Throwaway Type
- Rally-Styled Parking/  
Directional and Road Lights
- Seat Adjustment, Front—Two  
Way Manual (fore and aft.)  
(also dealer 6-way manual)
- Seat Belts—2—Front
- Seats, Bucket—Front
- Seat Cushion, Front—Full  
Foam Molded
- Seat Cushion, Rear—5-oz.  
Cotton Pad
- Seat, Folding Rear
- Security Panel, Folding
- Steering Wheel w./Partial Horn  
Ring
- Sun Vises—Left and Right
- Tires—6.50x13" Blackwall (6-cyl.)  
—7.00x13" Blackwall (V-8)
- Transmission—3-Speed Manual
- Wheel Covers—Deluxe
- Windshield Wipers—Single  
Speed

118

## BARRACUDA OPTIONAL EQUIPMENT

- Air Conditioning—Front Unit, Integral Heater
- Bumper Guards—Front and Rear
- Console (std. with automatic trans.)
- Defogger, Rear Window\*
- Differential, Sure-Grip
- Disc Brakes, Front w./Power Assist\*
- Emergency Flasher\*
- Engines
  - V-6: 273 cu. in., 4-bbl., 235 hp.
- Formula "S" Package (See page 120)
- Glass, Tinted
  - All windows (tinted rear window, std.)
  - Windshield Only (tinted rear window, std.)
- Instrument Panel Safety Padding
- Lights—Backup
- Mirror—Outside Left, Manual
  - Outside Left, Remote-Control
  - Inside Rearview, Day/Night
- Paint—Racing Stripes
- Power—Brakes
  - Steering
- Radio—AM Push-Button w./Antenna
- Rear Spring Load Levelers\*
- Seat Belts, Custom Retractable—Front and Rear
- Steering Wheel, 3-Spoke Wood-Grained
- Shock Absorbers, Firm Ride
- Rally Suspension Package—Includes H.D. Rear  
Springs, H.D. Torsion Bars and Sway Bar  
(8-cyl. Models Only)
- Tachometer (V-8 only)
- Tires—6.50x13" Whitewall (6-cyl.)  
—7.00x13" Blackwall (6-cyl.)  
—7.00x13" Whitewall  
—6.95x14" Blackwall  
—6.95x14" Whitewall
- Transmission—4-Speed Manual w./Floor Shift  
—3-Speed TorqueFlite Automatic
- Trailer-Towing Package
- Undercoating—w./Underhood Insulation
- Wheel Covers—Custom with knock-off hub design  
—Bolt-on Wheel Design
- Windshield Washers and Variable-Speed Wipers  
\*Dealer-Installed.

119-8 12/84

EQUIPMENT

## BARRACUDA ACCESSORY GROUPS

### BASIC GROUP

Radio—Transradio AM Push-Button—with antenna.  
Windshield Washer and Variable-speed Wipers.  
Mirror—outside left (manual)  
Mirror—Day/Night—inside rearview.

### FORMULA "S" PACKAGE (N.A. with Performance or Sport group)

Commando 273 6-Cyl. engine—4-bbl. carburetor  
Suspension Package—R.O. rear springs, R.O. torsion bars and sway bar.  
Shock Absorbers—Five Ride—front and rear  
Tachometer  
6.35 x 14" Special Blue Streak tires  
Heavy gauged, wide-rim 14" wheels  
14" Wheel Covers—bolt-on design

### PERFORMANCE GROUP (N.A. with Formula "S" Package)

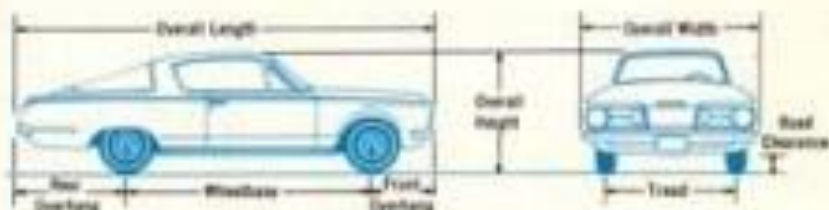
Commando 273 6-cyl. Engine—4-bbl. carburetor  
Suspension Package—R.O. rear springs, R.O. torsion bars, and sway bar.  
Power Brakes

### SPORT GROUP (N.A. with Formula "S" Package or 6.35 x 14" tires)

Steering Wheel—3-spoke simulated wood grain.  
Wheel Covers—bolt-on wheel design.  
Tires, Whitewall—6.50 x 12"—6-cyl.  
7.00 x 12"—8-cyl.

100-R 12/84

## BARRACUDA BASIC DIMENSIONS



Exterior Dimensions	Barracuda Sports Hardtop	Interior Dimensions	Barracuda Sports Hardtop
Wheelbase	106.0"	Seat Height—Front	7.8"
Overall Length	188.2"	—Rear	10.2"
Width	70.1"	Seat Depth—Front	18.1"
Height (5-pass. load) 6-cyl.	53.8"	—Rear	17.9"
Height (5-pass. load) V-8	52.5"	Headroom (eff.)—Front	38.2"
Tread—Front	55.9"	—Rear	36.8"
—Rear	55.0"	Legroom—Front	40.6"
Road Clearance at muffler—6 cyl.	5.4"	—Rear	31.1"
Road Clearance at muffler—V-8	5.7"	Hiproom—Front	56.9"
Overhang—Front	33.0"	—Rear	56.4"
—Rear	48.2"	Shoulder room—Front	54.2"
Turning diameter (curb to curb)	37.1"	—Rear	52.8"
		Kneeroom—Rear	1.0"

## BARRACUDA BASIC DIMENSIONS (Continued)

### Trunk Dimensions

A. Opening Width (at sill)	49.0"
B. Interior Height (max.)	14.5"
C. Interior Width (max.)	38.0"
D. Interior Length (to security panel)	24.5"

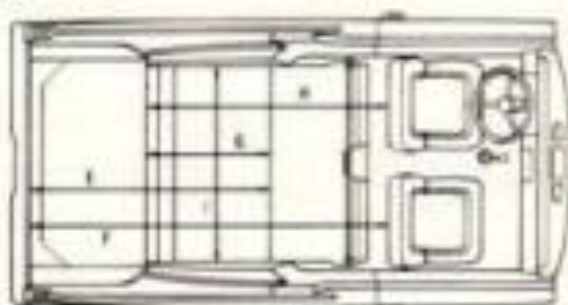


### Luggage capacity—usable (cu. ft.):

Trunk only	5.7
Trunk with security panel down	14.1
Trunk with security panel and 2nd seat down	22.4
Utility compartment only	8.8

### Trunk Plus Utility Compartment

E. Interior length (to back of second seat)	55.0"
F. Interior length (to back of front seat)	85.0"
G. Interior length (security panel to back of 2nd seat)	30.2"
H. Interior length (security panel to back of front seat)	80.0"
I. Width between wheelhoopings (utility compartment)	43.2"



122

## 1965 BARRACUDA SPECIFICATIONS

**Axle Assembly, Rear**—Semifloating flanged axle with 30 rolled splines on axle shaft. Hypoid gears, 2-pinion differential (4-pinion with Sure-Grip). These gears are machined by a special gear-cutting method for more precise gear contact, quieter operation, and longer gear life.

### Axle Ratio, Rear

	225 6-cyl.	273 V-8	273 4-604 V-8
With 3-speed manual transmission:			
Standard	3.23	3.23	3.23
Optional	3.55	2.93	2.93
Sure-Grip	3.23	3.23	3.23
	—	2.93	2.93
With 4-speed manual transmission:			
Standard	3.23	3.23	3.23
Optional	2.93	2.93	2.93
	3.55	3.55	3.55
Sure-Grip	3.23	3.23	3.23
	2.93	2.93	2.93

	225 6-cyl.	273 V-8	273 4-604 V-8
With TorqueFlite transmission:			
Standard	2.93	2.93	3.23
Optional	3.23	3.23	2.93
	3.55	3.55	3.55
Sure-Grip	2.93	2.93	3.23
	3.23	3.23	2.93

**Battery**—12-volt, 45-ampere-hour capacity.

**Bearings, Wheel**—Tapered-roller front wheels, ball bearing rear wheels.

**Brakes, Service**—Four-wheel hydraulic; internal-expanding, disc-over, self-energizing, self-adjusting—9" drums on 6-cyl., 10" drums on V-8 models.

**Effective Lining Area**: Six-cyl.—153.5 sq. in.; V-8—156.2 sq. in.

**Chrome Plating**—Double-nickel under chrome, used on exterior chrome surfaces, lasts up to 3 times longer than ordinary chrome plating. Two layers of nickel with different grain structures provide a weathertight base for the chrome plating.



## 1965 BARRACUDA SPECIFICATIONS (Continued)

**Circuit Breakers**—Circuit breakers keep vital electrical units operating even when intermittent "shorting" occurs. The following electrical circuits are protected with circuit breakers: Headlights, headlight beam indicator and windshield wipers.

Fusible safety link between battery and ammeter protects main electrical circuits.

**Clutch (Manual Transmission)**—Outside diameter, 225 Six—9.25"; 273 V-8—9.5". Release bearing is permanently lubricated ball bearing.

**Cooling System, Engine**—14 p.s.i. pressure-vent. bypass system (10 p.s.i. with air conditioner). Full-circle water jackets for all cylinders. Capacity: 225-cu.-in. 6-cyl.—13 qts. w./heater; V-8—18 qts. w./heater. Thermostat—Expansion-pellet-controlled, 180°F.

**Crankcase Capacity**—All engines: 4 qts. When oil filter is changed, an additional quart is required.

**Drive Shaft**—Tubular steel, dynamically balanced.

**Fan, Engine**—Six-cyl.—16" dia. 4 blades. 17" dia., 6 blades with air conditioning; 273 V-8—17" dia., 6 blades.

17" diameter fan, 7 blades with air conditioning.

**Filter, Fuel**—Two filters with all engines. Woven plastic 40-micron filter in gas tank. 15-micron filter in fuel line between fuel pump and carburetor.

**Filter, Oil Engine**—Full-flow throwaway-type.

**Filter, TorqueFlite Transmission Oil**—Full-flow internally mounted, provides 100% filtration of all circulating oil. Under normal driving conditions transmission oil and filter should not require changing.

**Fuel Tank Capacity**—18 gallons.

**Gauges**—Located on instrument panel. Oil pressure—and warning light. Alternator gauge—needle indicator shows rate of battery charge or discharge. Fuel level (gasoline)—needle indicator, thermal-electric. Engine temperature—needle indicator, thermal-electric.

**Glass Area (Square inches)**

	Over- all	Wind- shield	Rear Window	Side Window
Barracuda				
2-door Sports				
Hardtop	4340	985	2077	1288

124

**Headlamps, Single**—12-volt, sealed-beam, glare-protected; 7" lenses.

**Horsepower, Taxable**—Six—27.7; 273 V-8's—42.2.

**Ignition System**—12-volt, weatherproofed, with automatic distributor spark advance, ventilated contact points and neoprene resistor spark plug cables used on all engines. Dead breaker distributor points in Commands; 273 4-bbl.

**Lubrication, Suspension and Steering**—Four front-suspension ball joints require lubrication at 32,000-mile intervals. These are the only lube points in the suspension system. Steering linkage joints are lubricated and permanently sealed at the factory.

**Muffler, Exhaust**—Six and 273 2-bbl.; Reverse-flow, 3-pass, asbestos-wrapped muffler. Commands; 273 4-bbl. has straight-thru low restriction muffler with tail pipe resonator. All mufflers and tail pipes are slanted, inside and out.

**Plugs, Spark**—14 mm. with deep rubber-cap insulator seals and resistor cables.

**Safety-Rim Wheels**—Two tire-retaining beads on rim for protection in case of a blowout. Rim width: 4.5" all models

except with Formula "S" package. 5.5" with Formula "S" package.

**Seat Adjustment, Front**—Manual, two-way adjustment is made by releasing lever on left side of driver's seat and moving seat forward or backward. Adjustment limit: 4.5" front-to-rear with .7" rise as seat moves forward on inclined track. Dealer adjustable custom-positioned front bucket seat gives additional 1.6" fore-and-aft and 1" vertical travel plus 7.5" seat tilt.

**Shock Absorbers, Oriflow**—Hydraulic, double-acting, telescopic, automatically compensate to varying road conditions.

**Steering, Ball-Joint**—Steering knuckles pivot on low-friction ball joints for easy steering. Ball-joint lubrication interval—32,000 miles.

**Steering, Manual**—Low-friction, recirculating ball-ast gear. Symmetrical tiller-arm linkage with equal-length tie rods, low-friction ball joints. Gear ratio—24.0 to 1. Overall ratio—28.7 to 1. Number of steering wheel turns, full left to full right—3.3.

**Steering, Power, Constant-Control**—Full-Time Constant-Control. Gear ratio—15.7 to 1. Overall ratio—18.8 to 1. Number of steering wheel turns, full left to full right—2.5.

**Tire Pressures**—Refer to owner's manual.

125-R 12/64

SPECIFICATIONS

## 1965 BARRACUDA SPECIFICATIONS (Continued)

**Transmission, Synchro-Silent 3-speed Manual**—3-speed, synchronous-meshing in 2nd and 3rd gears, with manual shift lever on steering column. Helical gears all speeds.

Gear Ratio	225 6-cyl.	273 V-8
1st	2.95	3.02
2nd	1.83	1.78
3rd	1.00	1.00
Reverse	3.80	3.95

**Transmission, Synchro-Silent 4-speed Manual**—4-speed, fully synchronized in all forward gears. Floor-mounted shift lever with competition-type shift linkage.

Gear Ratio	225 6-cyl. and 273 V-8
1st	3.09
2nd	1.92
3rd	1.40
4th	1.00
Reverse	3.00

**Transmission, TorqueFlite**—3-speed automatic with torque converter. Accelerator-pedal kick-down control. Water-cooled. Maximum torque-converter ratio—2.2 to 1. Planetary-gear ratios: first—2.45 to 1; second—1.45 to 1; reverse—2.20 to 1. Maximum overall ratio—5.39 to 1.

**Turning Diameter**—(Curb-to-Curb) 37.1' all models.

**Universal Joint, Drive Shaft**—Front—Ball and transmission. Rear—Cross and roller.

**Voltage Regulator, Alternator**—12-volt voltage control with cut-out relay; moisture-protected.

**Windshield Washers, Electric Push-Button**—Electric-driven washer pump operates at push of windshield wiper knob.

**Windshield Wipers, Electric**—Constant-speed, parallel action, electrically operated. Wiper blade length 17". Variable-speed, electrically operated, optional. Wiper-blade arms have airfoil design that increases blade pressure on windshield as car speed increases—prevents windlift of wiper blades at turnpike speeds. Parallel action provides continuous cleaned area across center of windshield.