



SERVICE BULLETIN



SERVICE DEPARTMENT... CHRYSLER-PLYMOUTH DIVISION
CHRYSLER MOTORS CORPORATION

TECHNICAL INFORMATION ON ☐ IMPERIAL ☒ CHRYSLER ☐ PLYMOUTH ☐ VALIANT

The information in this bulletin supplements Service Bulletin No. 63-33, dated November 28, 1962.

If you encounter an owner who requests a reduction to the front seat height to provide additional headroom, the following procedures may be of assistance.

BENCH TYPE FRONT SEAT (MANUAL ADJUSTMENT):

Adjust the six-way adjustable seat to the lowest position according to the instructions outlined in Service Bulletin No. 63-33. To obtain an additional 1/4 inch of headroom, proceed as follows:

- (1) Remove the front seat assembly from the car.
- (2) Remove the stationary seat support plates from the seat assembly.
- (3) Enlarge the front and rear slots in both stationary support plates by filing downward 1/4 inch as shown in "A" in Figure 1.

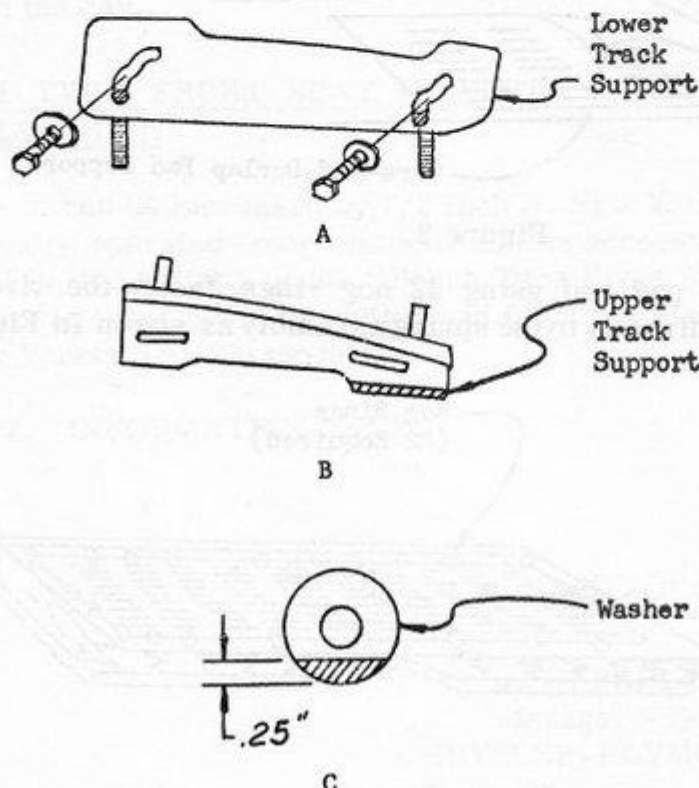


Figure 1

(over)

Dec. 19, 1962

No. 63-39

BODY

FRONT
SEAT
HEIGHT

ALL
1963
CHRYSLER
MODELS
EXCEPT
THOSE
EQUIPPED
WITH
BUCKET
SEATS

P-5139-C

Service Mgr.	
Shop Foreman	
Technicians	
Parts Mgr.	
Partsmen	

- (4) Cut off the down-turned flanges at the rear lower ends of each adjustable support plate as shown in "B" in Figure 1.
- (5) Cut 1/4 inch off of the support plate adjusting bolt washers as shown in "C" in Figure 1.
- (6) Assemble the stationary support plates to the seat assembly sliding the adjustable plate downward until the adjusting bolts bottom on the filed slot extensions. Rotate the washers until the flat side is down and tighten the bolts.
- (7) Then on Newport models install the seat assembly in the car. On New Yorker and 300 models an additional 1/2 inch of headroom can be obtained. Proceed with Step 8.
- (8) Remove the seat side shields and remove the seat back from the cushion.
- (9) Remove the cushion cover from the cushion spring assembly by removing all hog rings.
- (10) Remove the urethane foam pad.
- (11) Remove the wire-and-burlap pad support from the burlap underside of the cotton pad. The pad support is cemented to the pad and it can be easily peeled off. Refer to Figure 2.

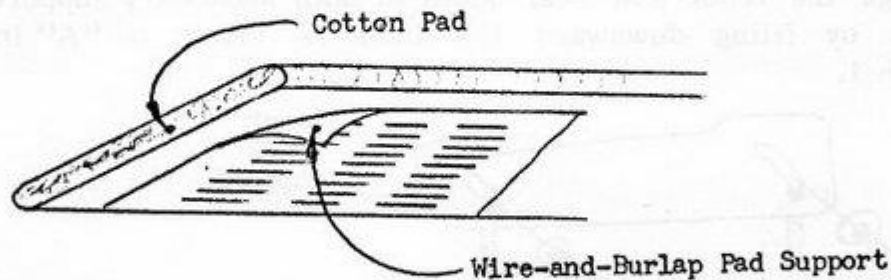


Figure 2

- (12) Discard the cotton pad and using 22 hog rings, fasten the wire-and-burlap pad support directly to the spring assembly as shown in Figure 3.

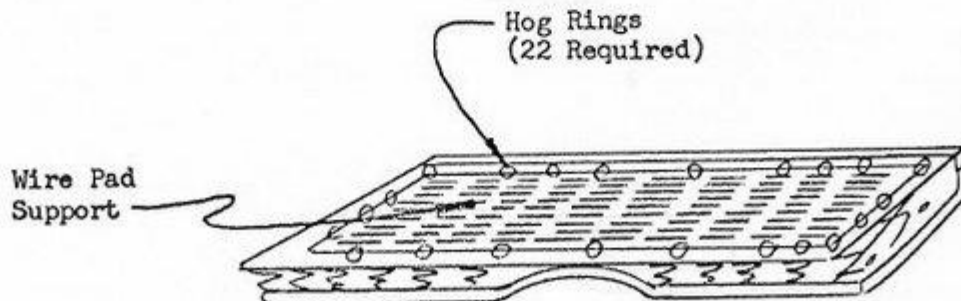


Figure 3

- (13) Using 13 hog rings fasten a 3/8" thick x 4" wide x 92" long jute pad around front and sides of the top rim wire of the cushion spring as shown in Figure 4.

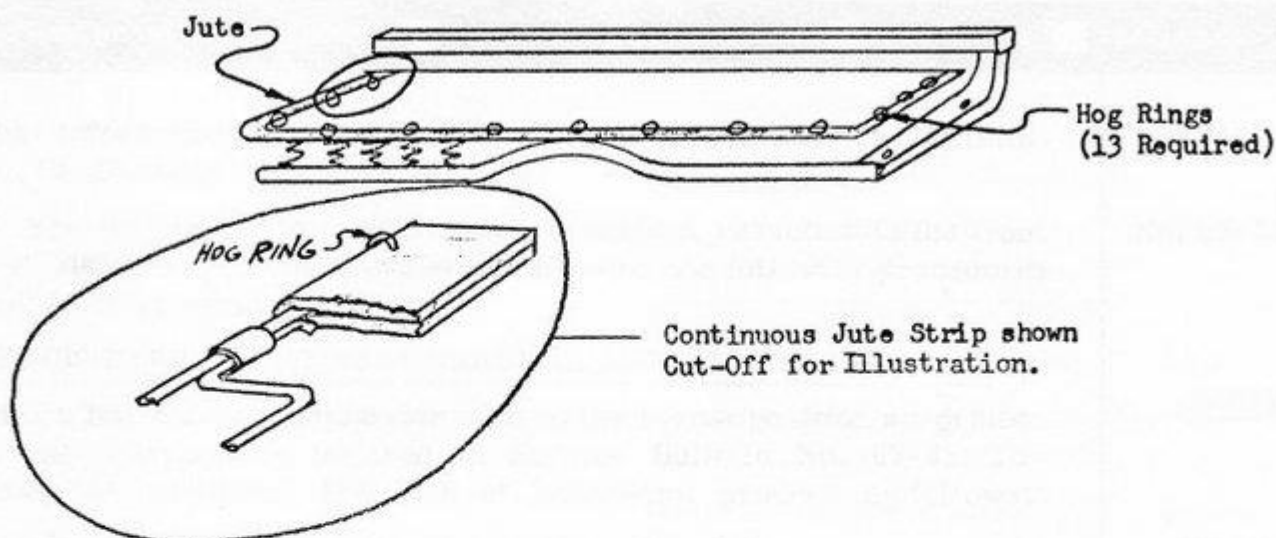


Figure 4

- (14) Place the urethane foam pad on top of the spring assembly and then install the cushion cover with hog rings.
- (15) Install the seat back, the seat side shields and install the seat assembly in the car.

BENCH TYPE FRONT SEAT (ELECTRIC ADJUSTMENT NEW YORKER MODELS ONLY):

Headroom can be increased by 1/2 inch on New Yorker models equipped with electrically operated front seat assemblies according to the same procedure outlined in this bulletin under "Bench Type Front Seat (Manual Adjustment)" covering the removal of the cotton pad from the wire-and-burlap pad support on New Yorker and 300 models.

POLICY: INFORMATION ONLY.

J. W. Farley
J. W. FARLEY
Manager - Service
CHRYSLER-PLYMOUTH DIVISION